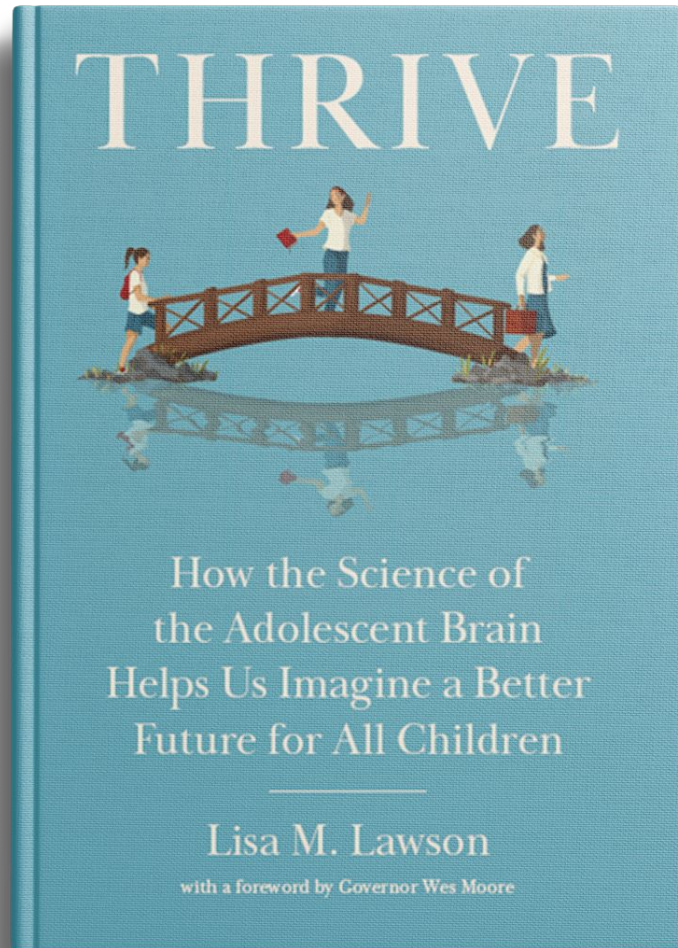




***THRIVE:* UNDERSTANDING WHAT YOUNG PEOPLE NEED TO SUCCEED**

Changing the Narrative



- **Adolescence is a second window for growth and possibility** — just like early childhood.
- **It's hard being an adult. It's even harder becoming one.** Today's young people face a vastly different — and harder — path to adulthood than previous generations.
- **To thrive**, every young person must have their basic needs met and experience supportive relationships.

“We must fundamentally shift policies, practices, and systems to not only address the challenges adolescents face but also prioritize their success.”

Adolescence: A Time of Forming Identity and Experimenting

Young people at this stage are wired to experiment, take risks and want a say in their own lives.

The challenge for child welfare and juvenile justice is whether system responses recognize that reality or make the path to adulthood even harder.



Adolescent Brain Development: How Does It Play Out?

EXECUTIVE FUNCTIONS

- Judgment, reasoning, problem-solving and emotional control still in development

PEERS AND SUPPORTIVE RELATIONSHIPS

- Highly influenced by peers and caring adults
- Approval, acceptance and praise trigger dopamine response

THE REWARD SYSTEM AND LEARNING

- Receptivity to reward-based learning
- Learn best through engagement and experience

THE REGULATORY SYSTEM

- Survival mode can heighten reactivity and risk-taking
- Trauma, stress and instability can disrupt development

Basic Needs



H.O.P.E. Emancipation Project at Livingstone College



Permanent Connections



SOUL Family Framework



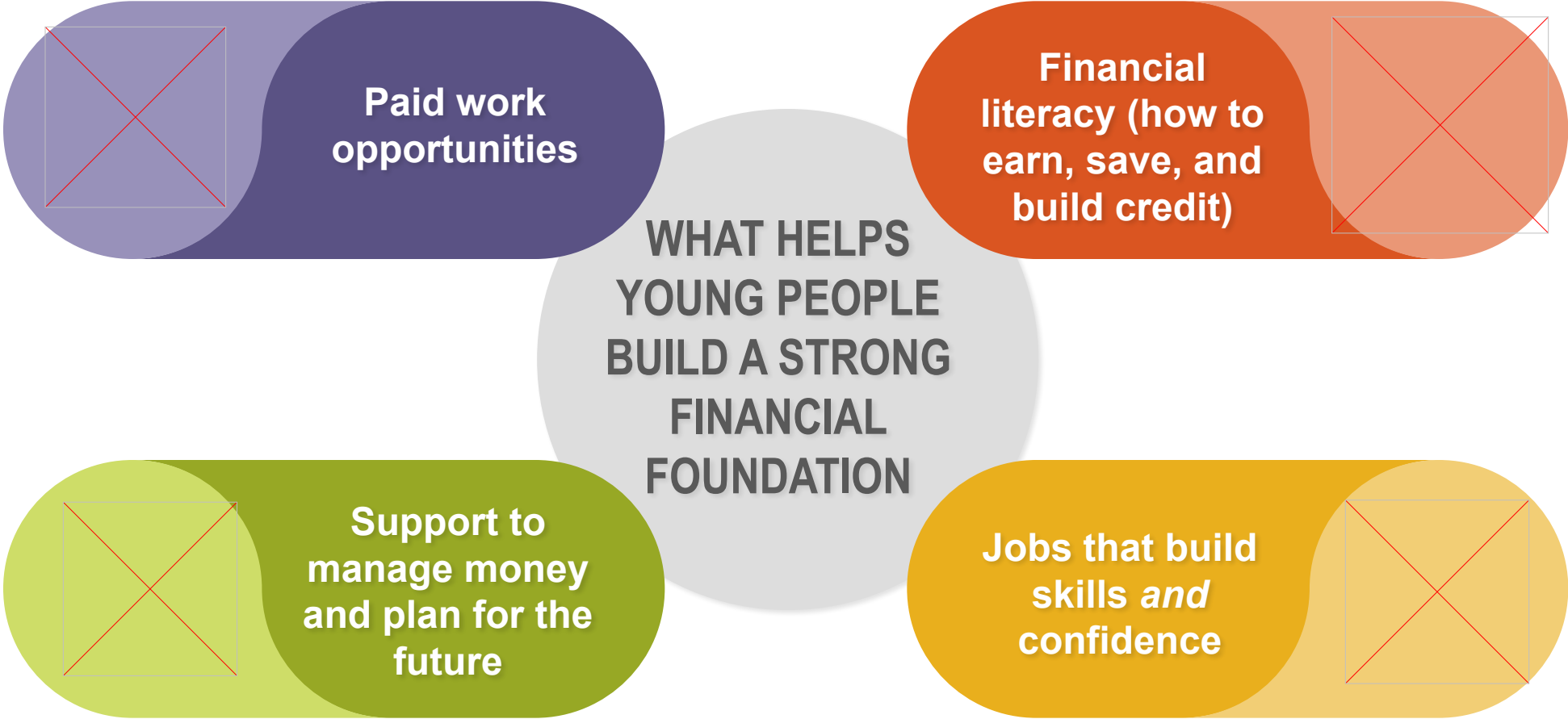
Education and Credentials



Excel Center



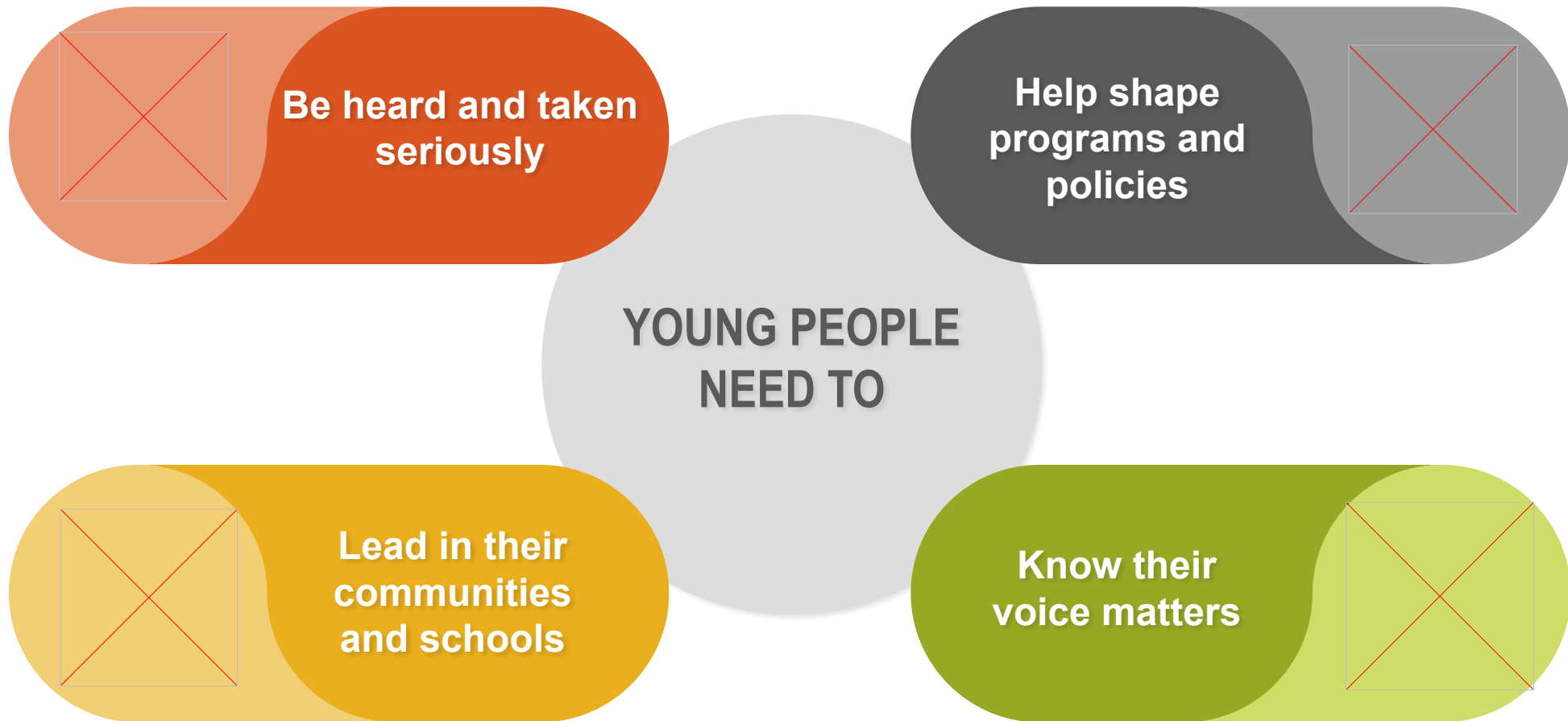
Financial Stability



The Partnership to Advance Youth Apprenticeship (PAYA)



Youth Leadership



Jim Casey Fellowship and Advisory Committee (ACOMM)



Navigating the Bridge to Adulthood

- Adolescence is a bridge between childhood and adulthood.
- Too many young people are asked to cross it without the support they need.
- Our job is to provide the guardrails, stability and encouragement that help them reach the other side safe, healthy and ready to thrive.





THE ANNIE E. CASEY FOUNDATION
www.aecf.org